

Dallas Southport Center



DALLAS **Dallas Southport Center**

SOUTHPORT

CENTER

FEATURES AND BENEFITS:

- **Located on Interstate 20 transportation corridor**
- **\$8.3 Million infrastructure improvements for 2004 increasing developed sites to 160 acres**
- **Sites for Commercial, Retail and Industrial**
- **Triple Freeport Inventory Exempt**
- **Foreign Trade Zone**
- **City of Dallas Enterprise Zone**
- **Population (10 miles) = 586,510**
- **Labor Force (10 miles) = 404,575**
- **Union Pacific Intermodal (3 miles on Interstate 45)**

Dallas Southport Center



Dallas Southport Center

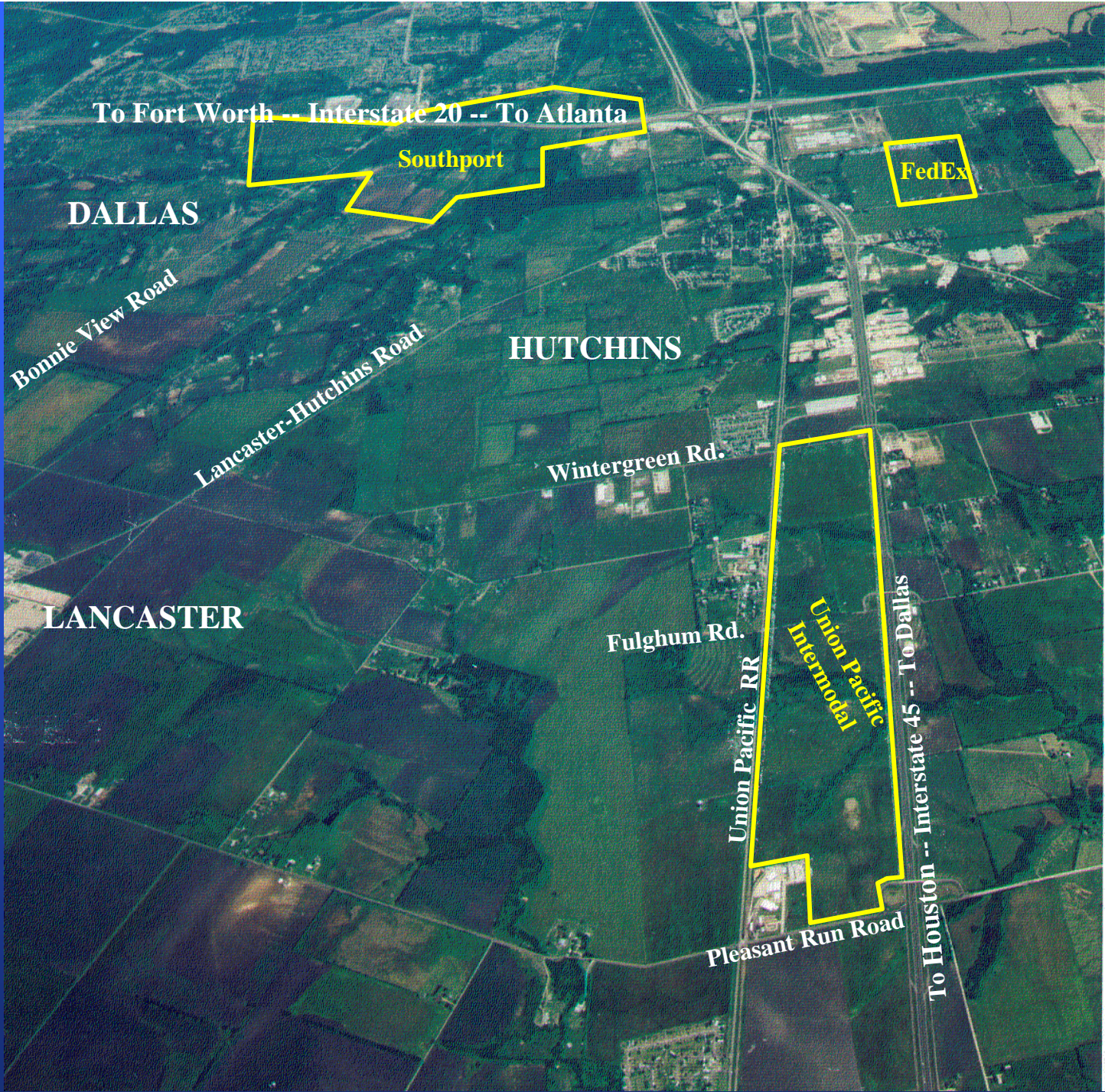
Retail



Dallas Southport Center

Wal-Mart Distribution Facility - 403,200 S.F.





To Fort Worth -- Interstate 20 -- To Atlanta

Southport

FedEx

DALLAS

Bonnie View Road

Lancaster-Hutchins Road

HUTCHINS

Wintergreen Rd.

LANCASTER

Fulghum Rd.

Union Pacific RR

Union Pacific Intermodal

To Houston -- Interstate 45 -- To Dallas

Pleasant Run Road

Dallas Southport Center



Interstate 45

500,000 SF Regional Hub for FedEx Ground

Union Pacific Intermodal Railport



For Information Contact:

Michael E. Rader

101 Summit Avenue, Suite 804

Fort Worth, Texas 76102

Phone: 817-332-9174

Fax: 817-332-9171

E-Mail: mikerader@sbcglobal.net